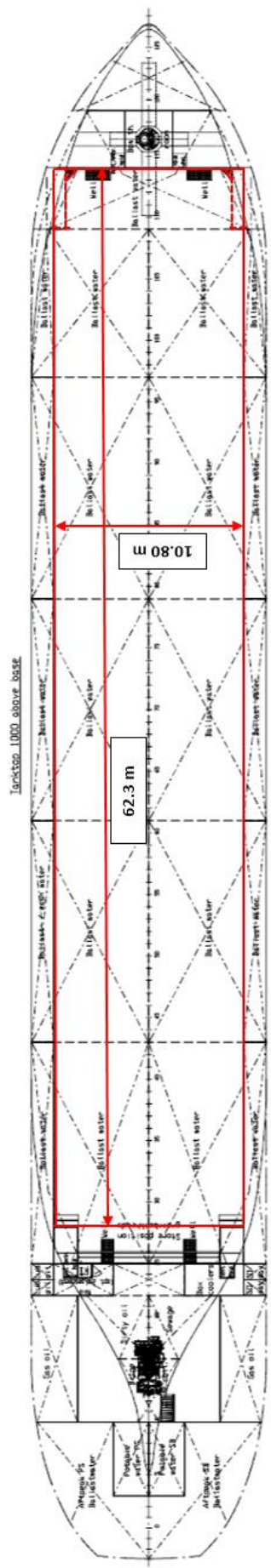
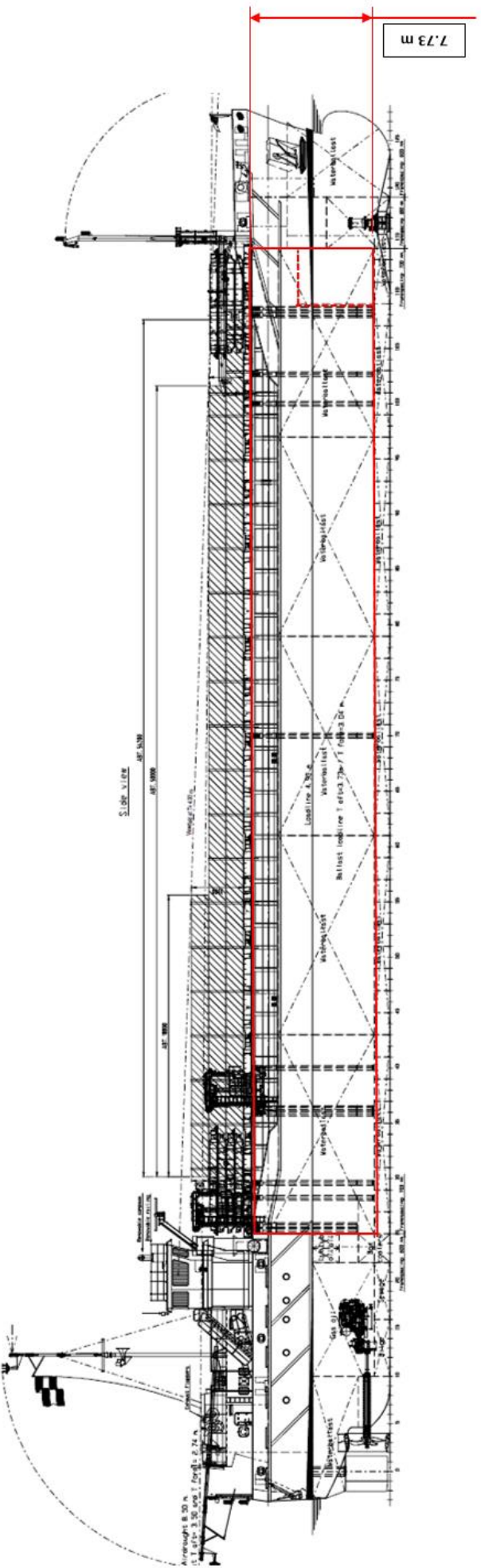




MV Lady Ariane

Flag:	Netherlands	DWAT:	3700
Port of Registry:	Delfzijl	DWCC:	3550
Call Sign:	PDBH	LOA:	88.0
IMO Number:	9760366	Beam:	13.35
Type:	Box-Shaped Single Decker	Draft (Summer Max):	4.9
Built:	2015	Air Draft (in Ballast):	8.5
Classification:	Lloyds Register	GT:	2544
Ice Class:	None	NT:	1216
Speed (Knots):	10	Hold Dimensions:	62.3 x 10.8 x 7.73 m
Consumption (Litres):	4000	Hatch Dimensions:	62.3 x 10.8 m
Main Engine:	Caterpillar	Hatch Cover Loading (mt/m <sup>2</sup> ):	1.85
Power:	750 kW	Hold Capacity – Grain (ft <sup>3</sup> ):	182000
Generators:	Caterpillar	Hold Capacity – Bale (ft <sup>3</sup> ):	182000
Shaft Generators:	N/A	Timber Fitted Capacity:	5300
Bow Thruster:	265 kW	TEU On Deck / Underdeck:	16 / 0
Timber Rails:	Yes	FEU On Deck / Underdeck:	8 / 0
		Total 30-Foot / 45-Foot EU's:	0 / 0





Hold Photos (Looking Aft, Bulkhead stowed)



Hold Photos (Looking Forward)