

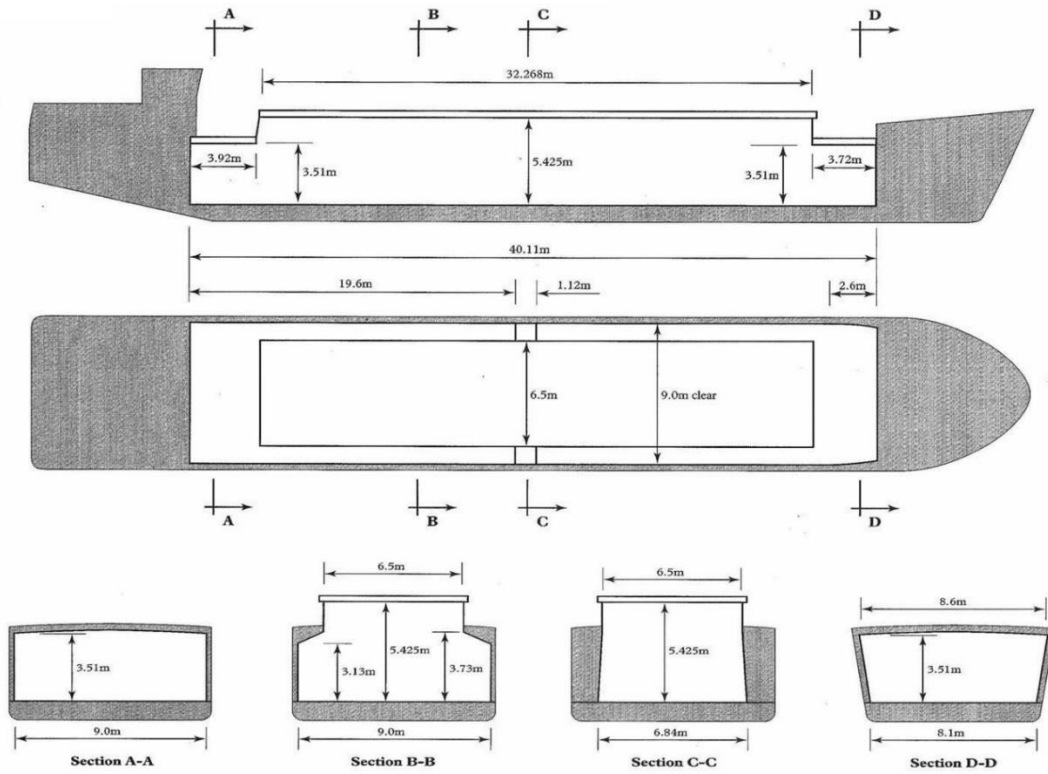


MV River Trader – Sister vessel of mv River Pride and mv River King

Flag:	Liberian	DWAT:	1400
Port of Registry:		DWCC (Winter):	1320
Call Sign:	MLHK2	LOA:	58.27
IMO Number:	8813051	Beam:	9.40
Type:	1 Hold / Hatch, MacGregor Covers, Steel Ceiling	Draft (Summer Max):	3.9
Built:	1989	Air Draft (in Ballast):	7.6
Classification:	Indian Register of Shipping	GT:	794
P&I Club:	Navigator	NT:	552
Speed (Knots):		Hold Electric Vents:	
Consumption (Litres):		Tank Top Loading (mt/m ²):	
Main Engine:		Hatch Cover Loading (mt/m ²):	
Power:		Hold Capacity – Grain (ft ³):	62400
Generators:		Hold Capacity – Bale (ft ³):	58000
Shaft Generators:		Timber Fitted Capacity:	
Bow Thruster:		Container Fitted TEU:	

1400 Dwt Class - (River King / River Pride / River Trader)

(not to scale)



Hold Arrangement



Hold (Forward)

(All details believed to be accurate but subject to verification)