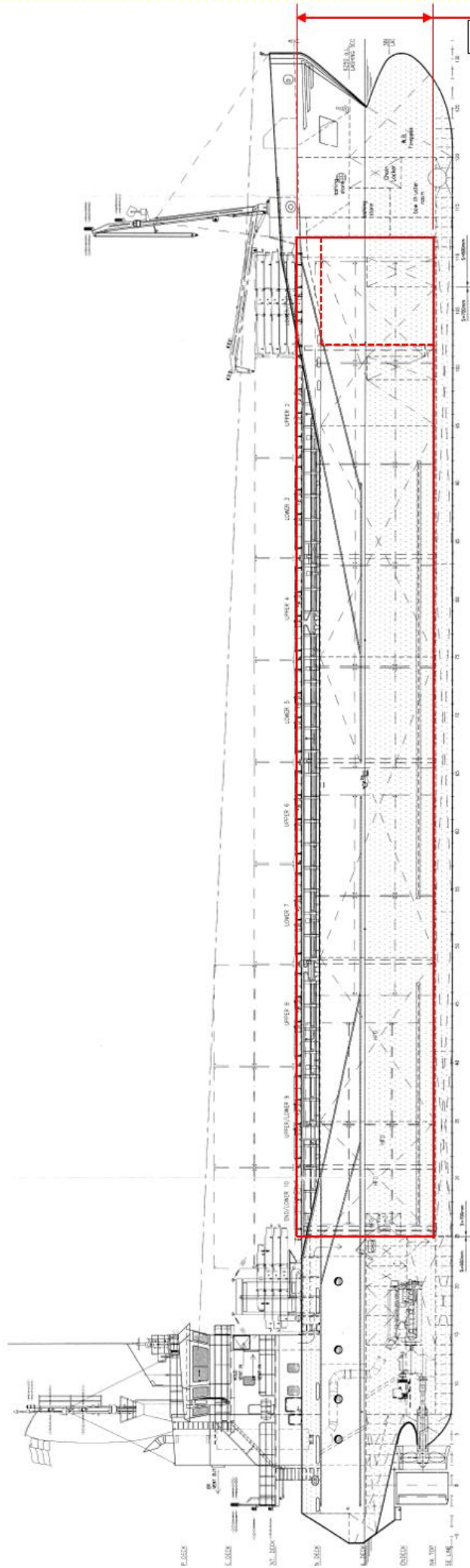


MV Scot Pioneer

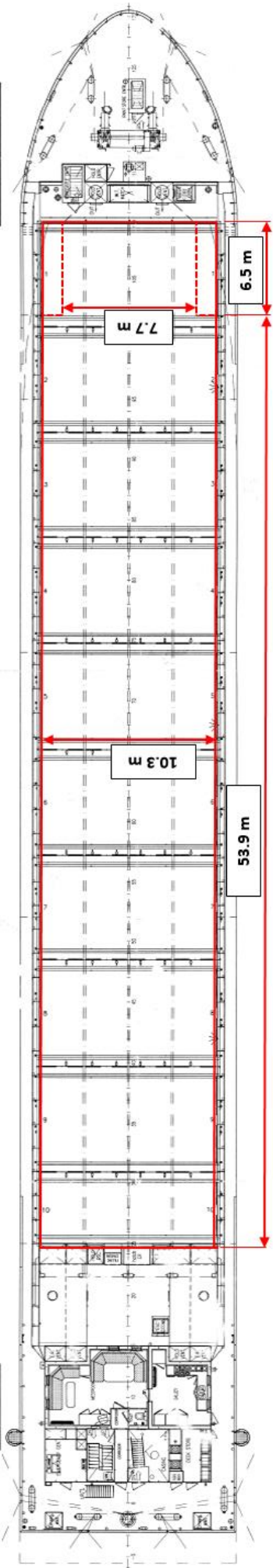
| | | | |
|-----------------------|-------------------------------|---|-----------------|
| Flag: | British | DWAT: | 3636 |
| Port of Registry: | Inverness | DWCC: | 3400 |
| Call Sign: | 2ALZ7 | LOA: | 89.99 |
| IMO Number: | 9331347 | Beam: | 12.50 |
| MMSI: | 235060914 | Draft (Summer Max): | 5.31 |
| Type: | Box-Shaped Single Decker | Draft / DWT (Winter): | 5.201 / 3526 |
| Built: | 12/2006, Peters Kampen | Air Draft (in Ballast): | 21.90 |
| Classification: | GL + 100 A5 E3 + MC E3 AUT | GT: | 2528 |
| Ice Class: | E3 / 1A | NT: | 1053 |
| Bulkheads: | 2 | WLTHC: | 5.85 |
| Speed (Knots): | 13 | Hold Electric Vents: | 2 |
| Consumption (Litres): | MGO | Tank Top Loading (mt/m ²): | 15 |
| Main Engine: | Wartsila 9L20 | Hatch Cover Loading (mt/m ²): | 1.6 |
| Power: | 1800 kW | Hold Capacity – Grain (ft ³): | 174,066 |
| Generators: | Valmet | Hold Capacity – Bale (ft ³): | 174,066 |
| Shaft Generators: | - | Timber Fitted Capacity: | 4700 |
| Bow Thruster: | 390 kW | Grain-Fitted: | Yes |
| TPC: | 11.00 | TEU On Deck / Underdeck: | 52 / 105 |
| Timber Rails: | No | FEU On Deck / Underdeck: | 24 / 48 |
| | | Total 30-Foot / 45-Foot EU's: | 0 / 24 |



8.15 m

FORECASTLE DECK 8000-9612 A.B.

MAIN DECK 8000 A.B.



7.7 m

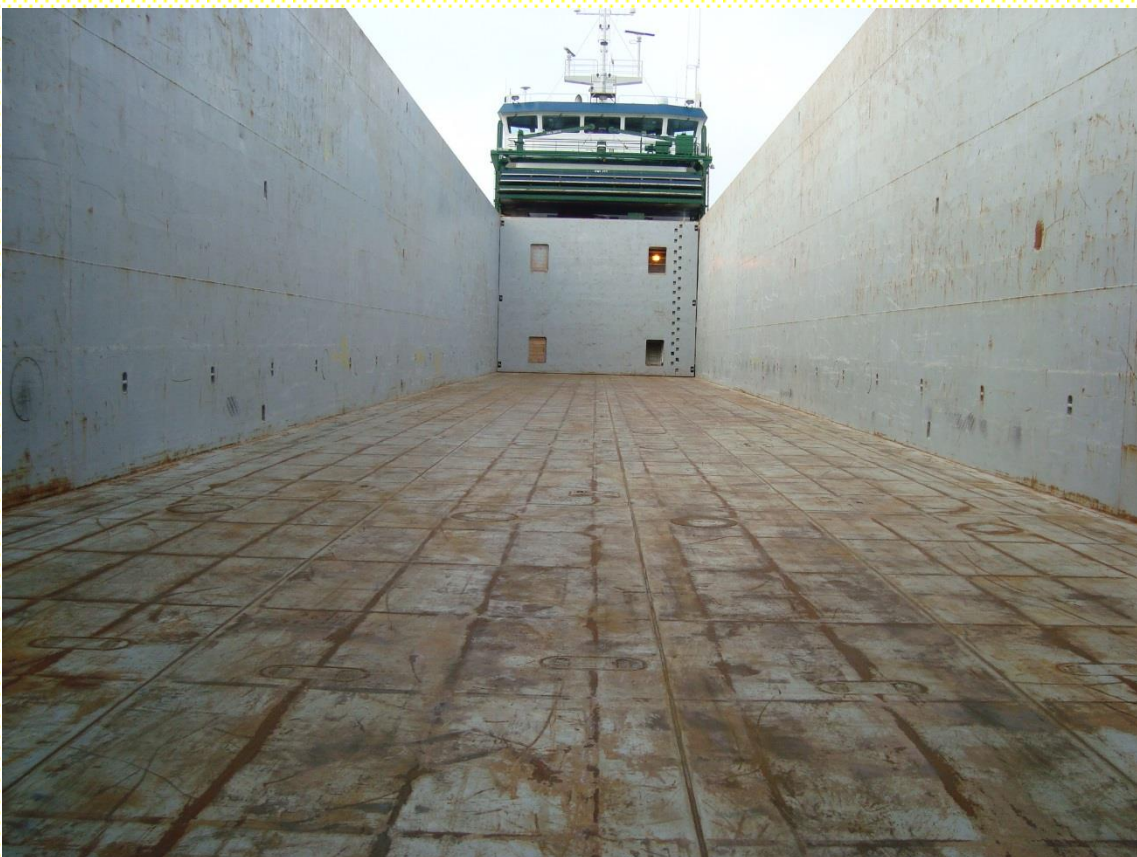
10.3 m

6.5 m

53.9 m



Hold (Forward)



Hold (Aft)

(All details believed to be accurate but subject to verification)