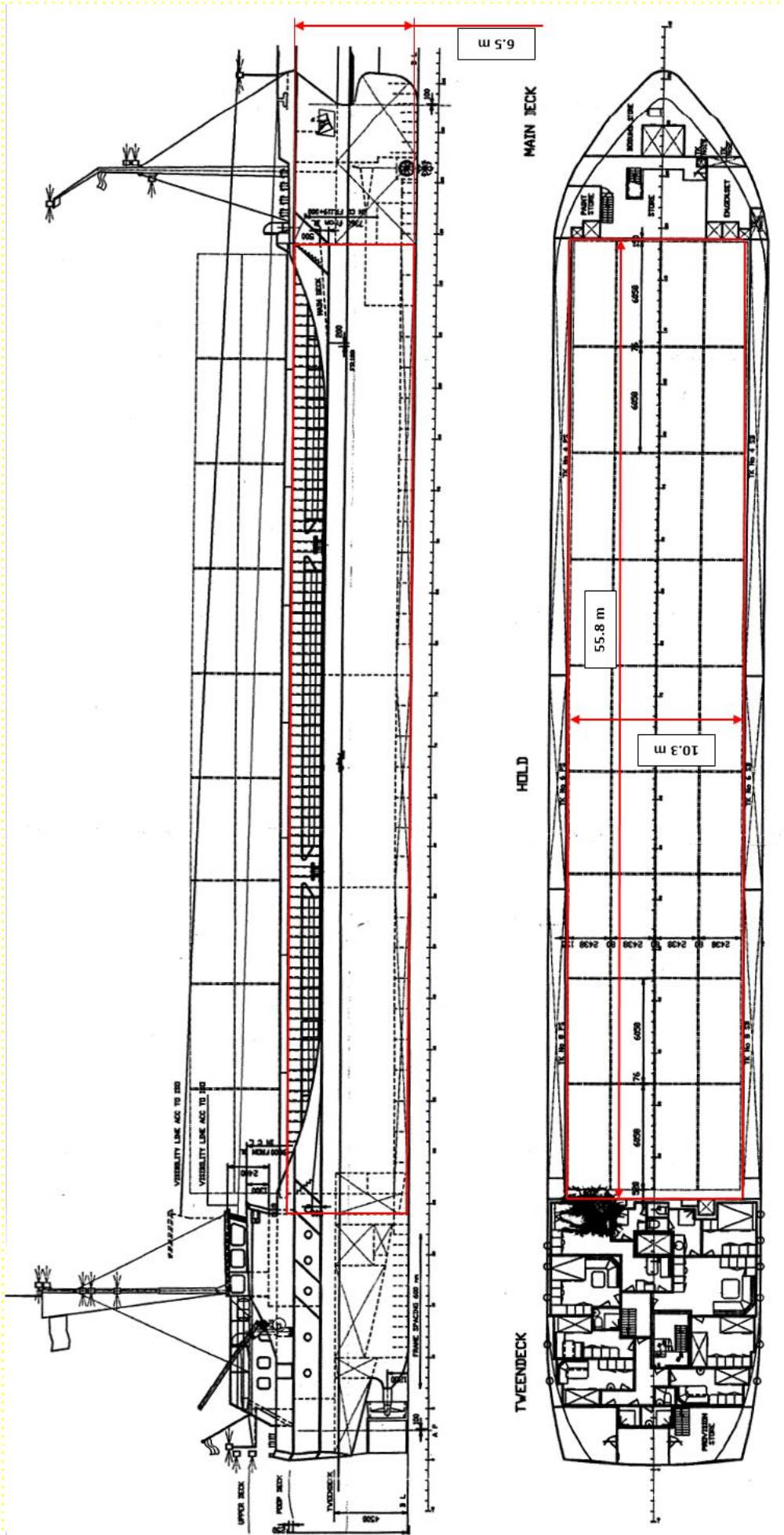


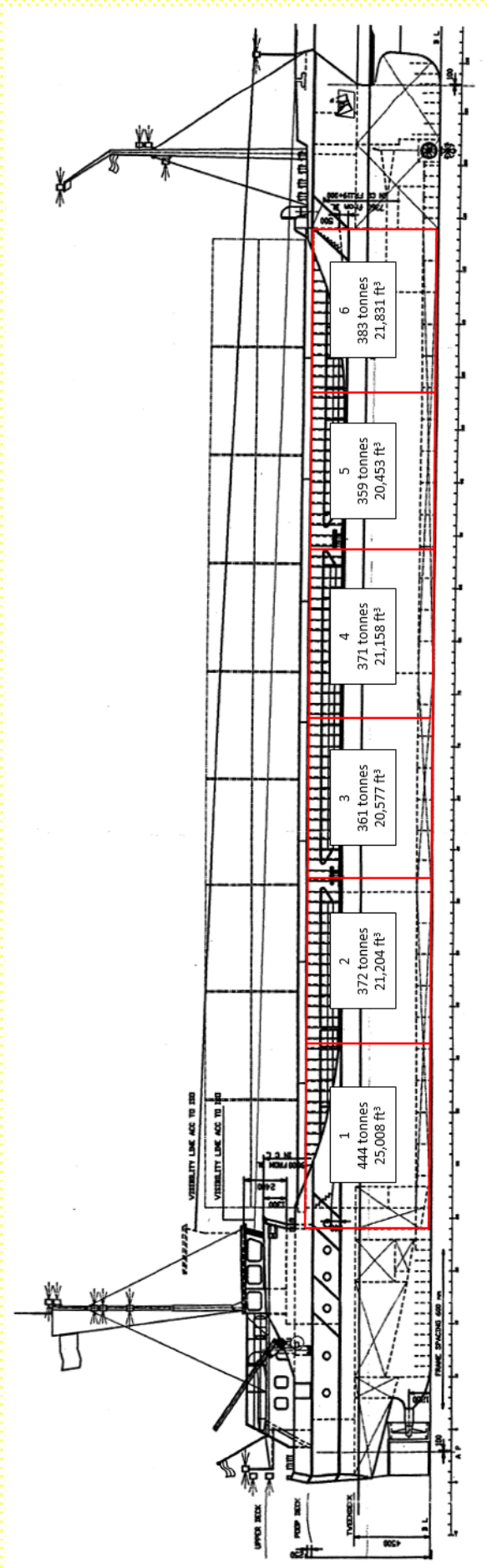


MV SMN Explorer on Time Charter to Scotline

Flag:	Liberia	DWAT:	2521
Port of Registry:	Monrovia	DWCC:	2350
Call Sign:	D5PH5	LOA:	81.68
IMO Number:	9137193	Beam:	12.40
MMSI:	235007950	Draft (Summer Max):	4.25
Type:	Box-Shaped Single Decker	Draft / DWAT (Winter):	4.16 / 2437
Built:	1996, SOC. COM. NAVOL, OLTENITA	Air Draft (in Ballast):	6.5
Classification:	IRS (IACS)	GT:	1882
Ice Class:	None	NT:	1020
Bulkheads:	1	WLTHC:	5.00
Speed (Knots):	10	Hold Electric Vents:	
Consumption (Litres):	4000	Tank Top Loading (mt/m <sup>2</sup> ):	10
Main Engine:	ABC 6MDZC	Hatch Cover Loading (mt/m <sup>2</sup> ):	
Power:	1103 kW	Hold Capacity – Grain (ft <sup>3</sup> ):	130000
Generators:		Hold Capacity – Bale (ft <sup>3</sup> ):	130000
Shaft Generators:	No	Timber Fitted Capacity:	4100
Bow Thruster:	254 kW	Grain-Fitted:	Yes
TPC:	9.00	TEU On Deck / Underdeck:	32 / 72
Timber Rails:	No	FEU On Deck / Underdeck:	16 / 32
		Total 30-Foot / 45-Foot EU's:	0 / 0



Pure box hold



Bulkhead Spacing (tonnage based on grain)



Hold Photo (Fore)



Hold Photo (Aft)

(All details believed to be accurate but subject to verification)