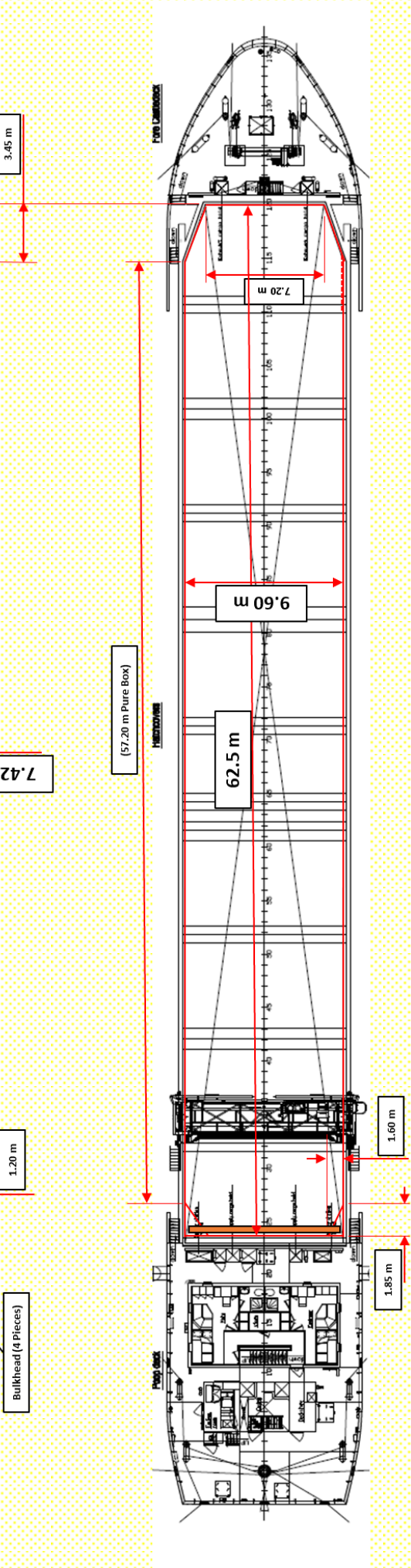
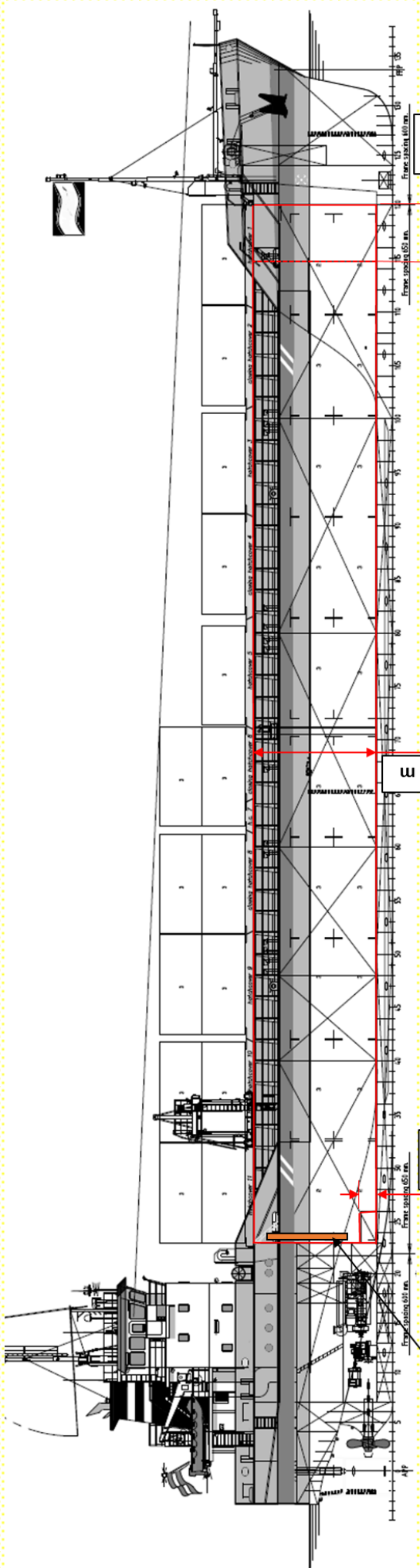




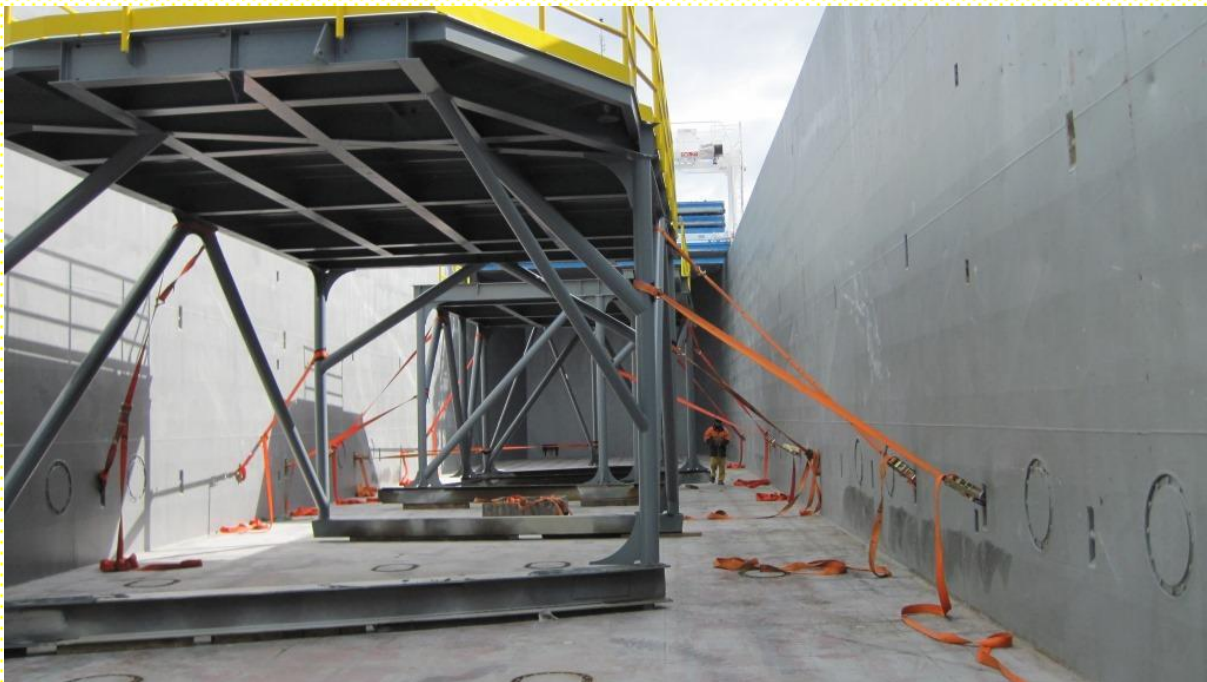
MV Eastern Virage

Flag:	British	DWAT:	3577
Port of Registry:	London	DWCC:	3350
Call Sign:	2IXV8	LOA:	88.97
IMO Number:	9411824	Beam:	11.8
MMSI:	235 113 664	Draft (Summer Max):	5.40
Type:	Box-Shaped Single Decker	Air Draft (in Ballast):	17.9 m (@ 3.5 m draught)
Built:	2012, Bijlsma Shipyard	Draft / DWCC (Winter Max):	5.287 / 3250
Bulkheads:	2 (7 Positions)	WLTHC:	5.5 m
Classification:	Bureau Veritas	GT:	2281
Ice Class:	None	NT:	1170
Speed (Knots):	10	Hold Dimensions:	62.5 x 9.6 x 7.42 m
Consumption (Litres):	6000	Hatch Dimensions:	62.5 x 9.6 m (11 Pcs)
Main Engine:	Wartsila	Hatch Cover Loading (mt/m ²):	1.75
Power:	1440 kW	Tank Top Loading (mt/m ²):	15
Generators:	Yes	Hold Capacity – Grain (ft ³):	155300
Shaft Generators:	N/A	Hold Capacity – Bale (ft ³):	155300
Bow Thruster:	285 kW	Timber Fitted Capacity (m ³):	4400
Timber Rails:	No	TEU On Deck / Underdeck:	48 / 56
Cement Holes:	4	FEU On Deck / Underdeck:	- / -
Grain Fitted:	Yes	TPC:	9.97





Hold Photos (Looking Aft, Bulkhead stowed)



Hold Photos (Looking Forward)

All details believed to be correct but without guarantee.