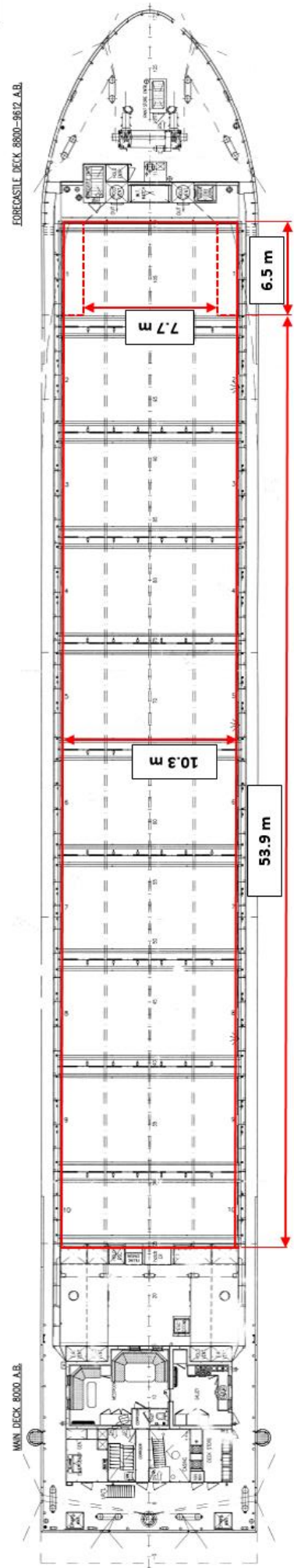
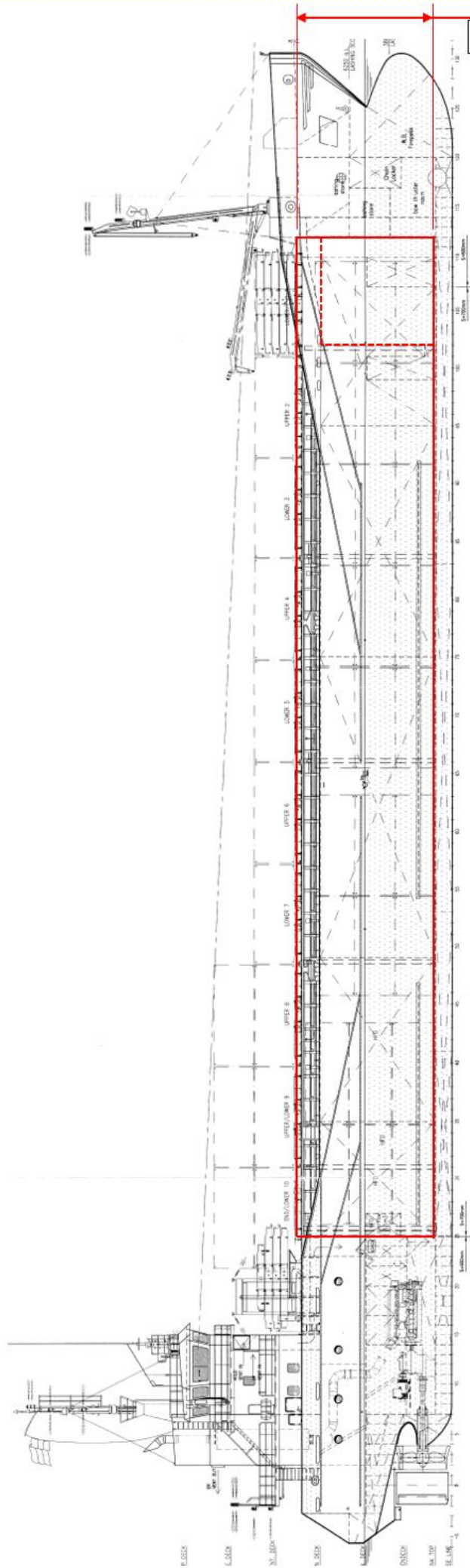




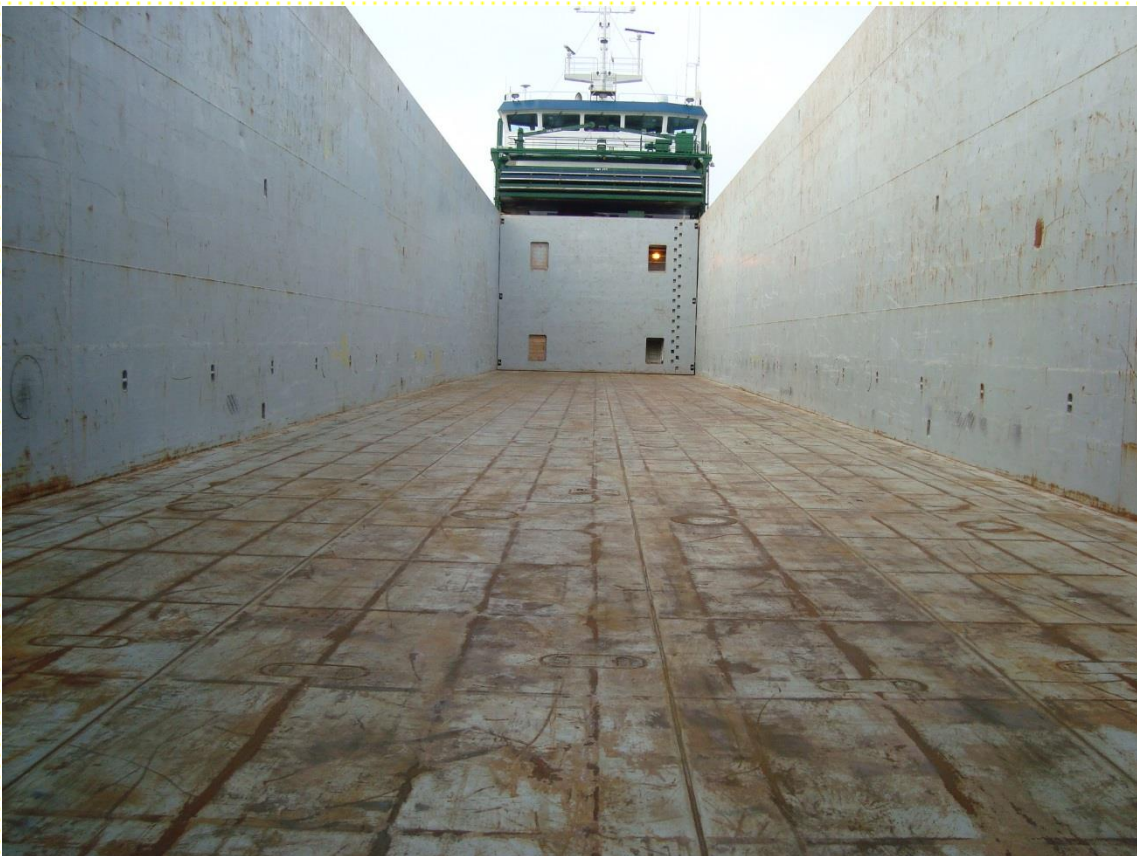
MV Scot Pioneer

Flag:	British	DWAT:	3636
Port of Registry:	Inverness	DWCC:	3400
Call Sign:	2ALZ7	LOA:	89.99
IMO Number:	9331347	Beam:	12.50
MMSI:	235060914	Draft (Summer Max):	5.31
Type:	Box-Shaped Single Decker	Draft / DWT (Winter):	5.201 / 3526
Built:	12/2006, Peters Kampen	Air Draft (in Ballast):	21.90
Classification:	LR	GT:	2528
Ice Class:	E3 / 1A	NT:	1053
Bulkheads:	2	WLTHC:	5.85
Speed (Knots):	13	Hold Electric Vents:	2
Consumption (Litres):	MGO	Tank Top Loading (mt/m ²):	15
Main Engine:	Wartsila 9L20	Hatch Cover Loading (mt/m ²):	1.6
Power:	1800 kW	Hold Capacity – Grain (ft ³):	174,066
Generators:	Valmet	Hold Capacity – Bale (ft ³):	174,066
Shaft Generators:	-	Timber Fitted Capacity:	4700
Bow Thruster:	390 kW	Grain-Fitted:	Yes
TPC:	11.00	TEU On Deck / Underdeck:	52 / 105
Timber Rails:	No	FEU On Deck / Underdeck:	24 / 48
		Total 30-Foot / 45-Foot EU's:	0 / 24





Hold (Forward)



Hold (Aft)

(All details about and given in good faith but without guarantee)